



# **Euro-Mediterranean Charter for Enterprise**

## **Framework for public-private consultation**

### **EU example**

**Wojciech SOPINSKI**  
**SME Policy Unit**

**Barcelona**

**16 April 2012**

Barcelona – Public-Private  
Consultations

**16 April 2012**

# OUTLINE

1. Framework conditions
2. EU SME policy – **the Small Business Act for Europe**
3. Commission's global approach (methodology)
4. Practical approach in the context of SME policy

# Framework conditions

Transparent

Open

Frequent

Wide

Structured framework

Dimension 7 of the  
EUMED Charter – Strong  
business associations



# EU SMEs = EU's growth engine

## SMEs vital for the EU economy

99,8 of EU businesses

23 million

58% of total business turnover – 14 billion euros.

67% of private jobs belongs to SMEs.

Main job creator

# EU SME Policy - framework

## The Small Business Act for Europe (2008)

Set of politically binding principle (10 principles)

Reduction of administrative burden

Access to finance

Access to markets

# Commission's global approach (methodology)

Interactive Policy Making

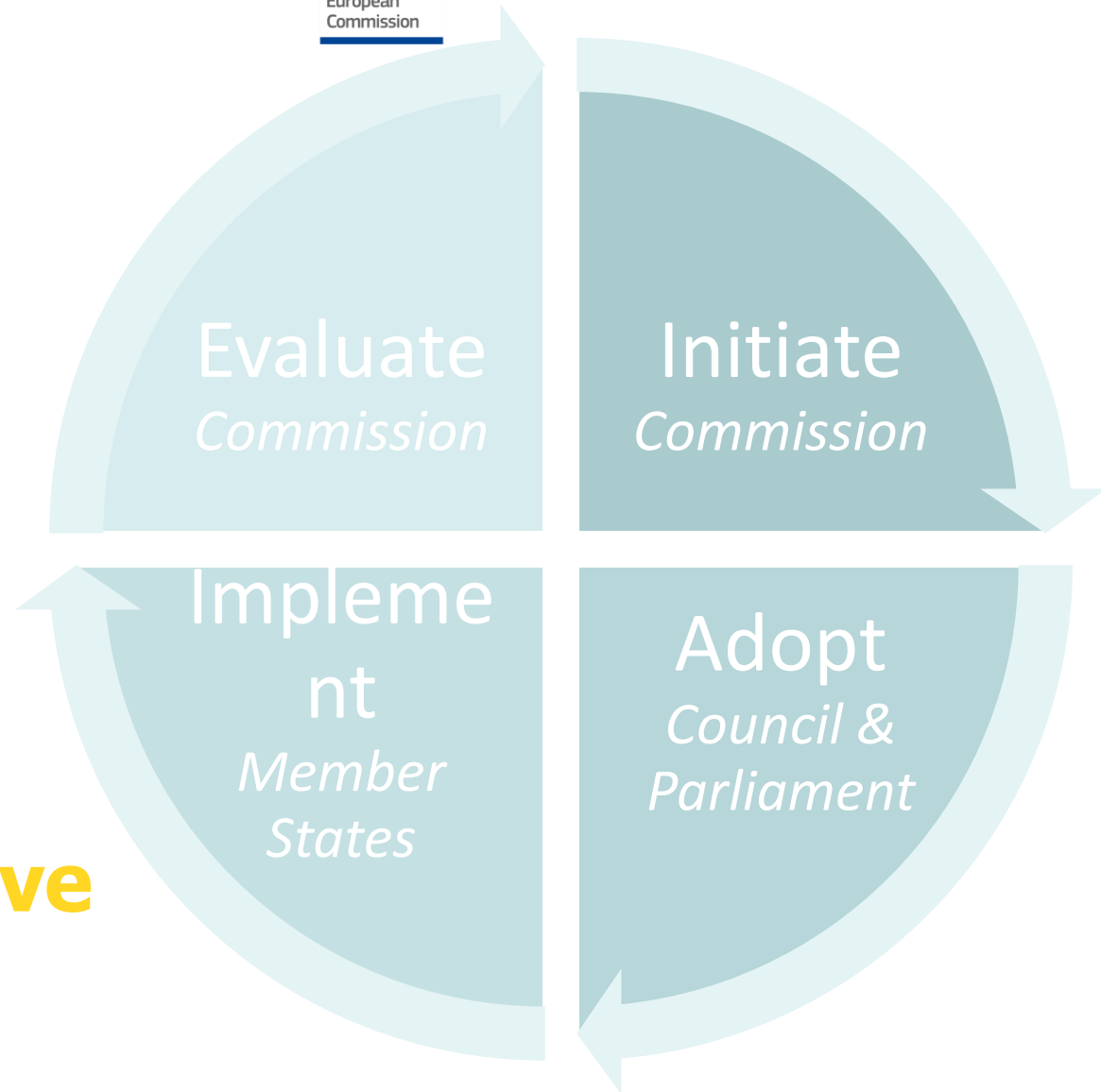
Impact assessments

Commission Work Plan

Road Maps.

*SME Test*

# The Legislative Cycle

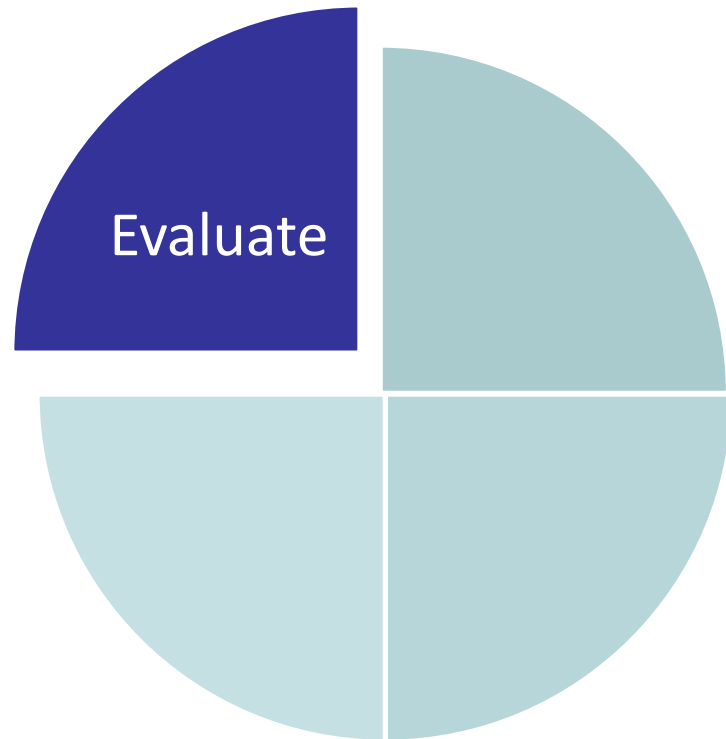


# Setting the agenda: evaluation

## ***Evaluation***

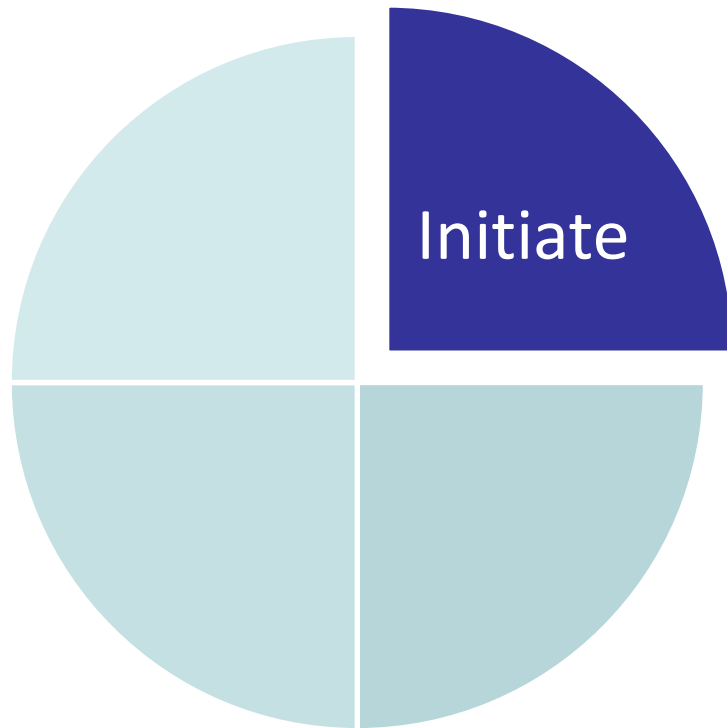
*Which legislation is causing SMEs problems?*

***Administrative  
Burdens reduction  
programme  
Fitness checks***





# Propose legislation



*Long-term planning :  
Roadmaps*

**Consultations**

**Impact Assessment  
reports**

# The SME Test in the Commission Impact Assessment Guidelines

Consult  
the  
SME Stakeholders

1. Establish whether SMEs are among the affected population
2. Measure the impact on SMEs (cost/benefit analysis)
3. Envisage if needed mitigating measures

# SME Test Implementation in 2011

46 impact assessments

27 relevant for SME proposals

27 SME Tests

# SME test: why? what is it?

Disproportionate effect of compliance costs on SMEs →

1. Consult with SMEs & representatives
2. Preliminary assessment of the businesses likely to be affected
3. Measurement of the impact on SMEs
4. Assessment of alternative options and mitigating measures



# SBA Implementation practice

The Network of SME Envoys 27+ Commission

Regular meetings with business stakeholders – **SBA follow up** meetings

Interactive Policy Making – SME Panel (Enterprise Europe Network)

Extended consultation period – 12 weeks

Improved data collection – SME fact sheets

# Involving SMEs in policy making

## **SME Panels**

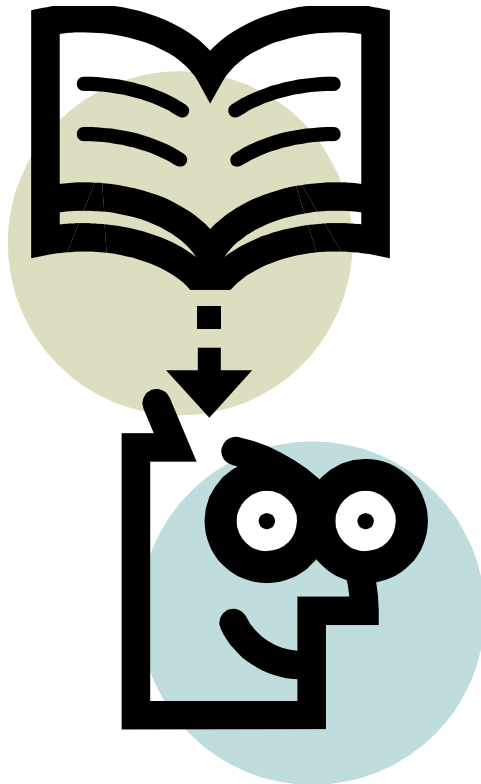
- Quick and efficient tool to involve SMEs in EU policy making
- Panels help make EU regulation smart(er)

## ***Feedback mechanism***

- SME Feedback: making policy makers aware of existing problems
- thus contribute to simplification of legislation

# The use of SME panels - example

1. Companies face problems with cross border transactions due to different national contract law
2. European Commission is examining the possibility for a European contract law to resolve the situation
3. An impact assessment is carried out
4. Stakeholders consultation (compulsory)
5. DG Enterprise is contacted – use of SME panel to get information from SMEs – [questionnaire](#)
6. Enterprise Europe Network helps collecting opinions
7. The input is built into the findings of the impact assessment
8. The European Commission proposes an European Contract Law for cross border contracts



Thank you for your  
attention!

Wojciech SOPINSKI  
[wojciech.sopinski@ec.europa.eu](mailto:wojciech.sopinski@ec.europa.eu)